



MONTHLY MEMBERSHIP PROGRESS REPORT

District 5M 7

Results as of: 3/31/2017

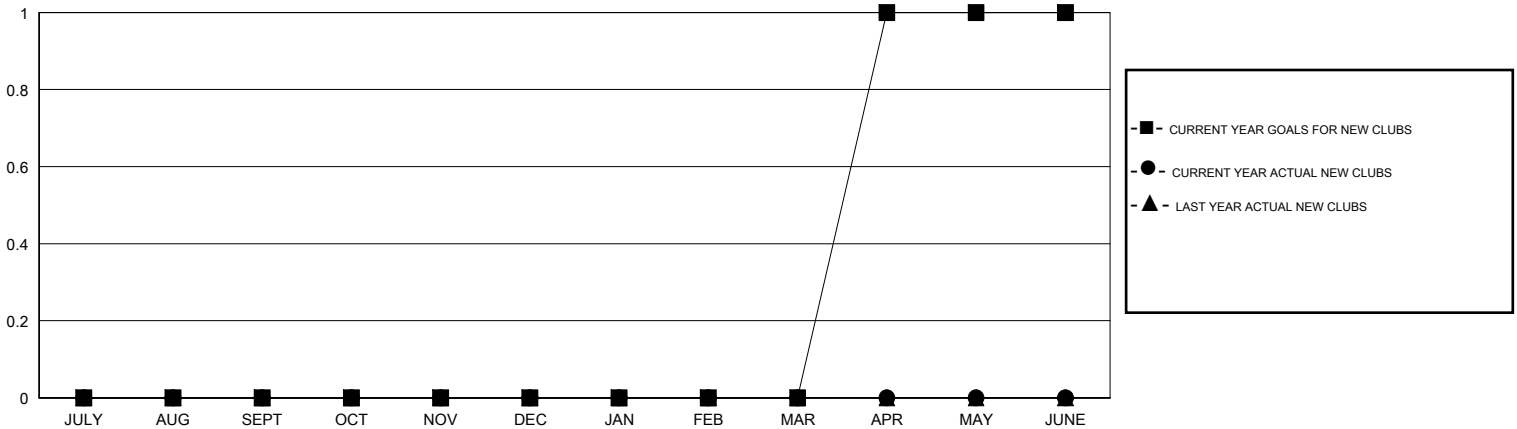
GMT: Judy Hankom

LOCATION MINNESOTA

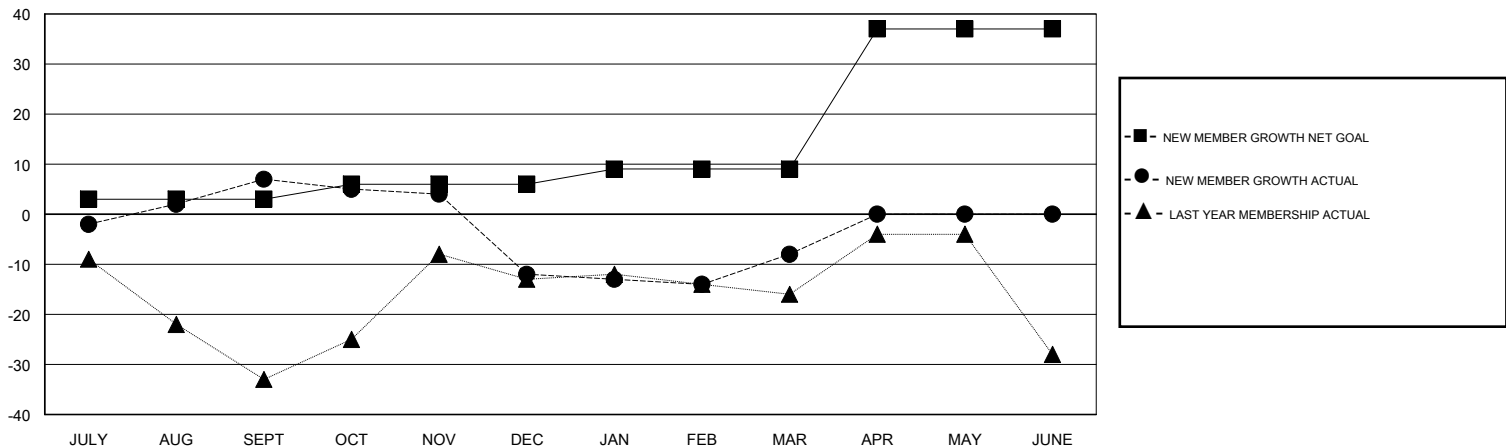
GMT CA

Clubs				Members			
RESULTS FOR 2016-2017				RESULTS FOR 2016-2017			
QUARTER	NEW CLUB GOAL	NEW CLUBS	DROPPED CLUBS	QUARTER	NEW MEMBER GROWTH NET GOAL (not reinstated or transfers)	NEW MEMBER GROWTH ACTUAL (not reinstated or transfers)	DROPPED MEMBERS ACTUAL (including transfers)
JULY/AUG/SEPT	0	0	0	JULY/AUG/SEPT	3	60	53
OCT/NOV/DEC	0	0	0	OCT/NOV/DEC	3	28	47
JAN/FEB/MAR	0	0	0	JAN/FEB/MAR	3	32	28
APR/MAY/JUNE	1	0	0	APR/MAY/JUNE	28	0	0

GOALS AND ACTUAL NEW CLUBS CUMULATIVE



GOALS AND ACTUAL MEMBERS CUMULATIVE



DROPPED CLUBS: 0	35 CLUBS OF 52 ADDED 1 OR MORE NEW MEMBERS	<u>GENDER DISTRIBUTION</u>	
DROPPED MEMBERS		MALE	1,452 (76.34%)
DECEASED	20	FEMALE	450 (23.66%)
CLUB CANCELLED	0	TOTAL FAMILY UNIT MEMBERS	367
OTHER	108	FAMILY MEMBERS PAYING HALF DUES	189
TOTAL	128		

[CLICK HERE FOR CUMULATIVE MEMBERSHIP DATA](#)